



Oracle e-Business Suite (EBS) & Fusion Health Check with AI readiness (Powered by **SPEED**)

Introduction

Over time, Oracle EBS and Fusion environments naturally accumulate layers of configuration, customisations, and undocumented decisions. Patches, upgrades, business growth, and evolving processes cause systems to become increasingly complex often creating uncertainty, operational risk, and reduced visibility.

Many organisations today struggle to answer fundamental questions:

- *Do we truly understand the current state and health of our Oracle solution?*
- *Is our configuration accurately documented?*
- *Have customisations expanded beyond what we can control or justify?*
- *Have user access and segregation of duties eroded over time?*
- *Is our non-production environment aligned with production?*
- *Are we ready, or even viable to move to Oracle Fusion Cloud?*
- *What are the AI use cases and what is embedded AI and GenAI in Fusion and AI on OCI for EBS*

Why AI matters right now;

- Oracle's revolutionary shift toward embedded AI and GenAI (ERP, SCM, HCM, EPM)
- EBS customers needing clarity on "AI on OCI vs Fusion AI"
- Agents becoming central to Oracle's roadmap
- Audit/compliance teams requiring new governance models

What AI does NOT do;

- AI does not replace core controls
- AI does not eliminate patching
- AI does not remove the need for configuration documentation
- AI outputs require governance

AI maturity across Health Check Levels

Level	AI Component
0	None, baseline only
1	AI readiness & use cases
2	AI governance, SoD & technical alignment

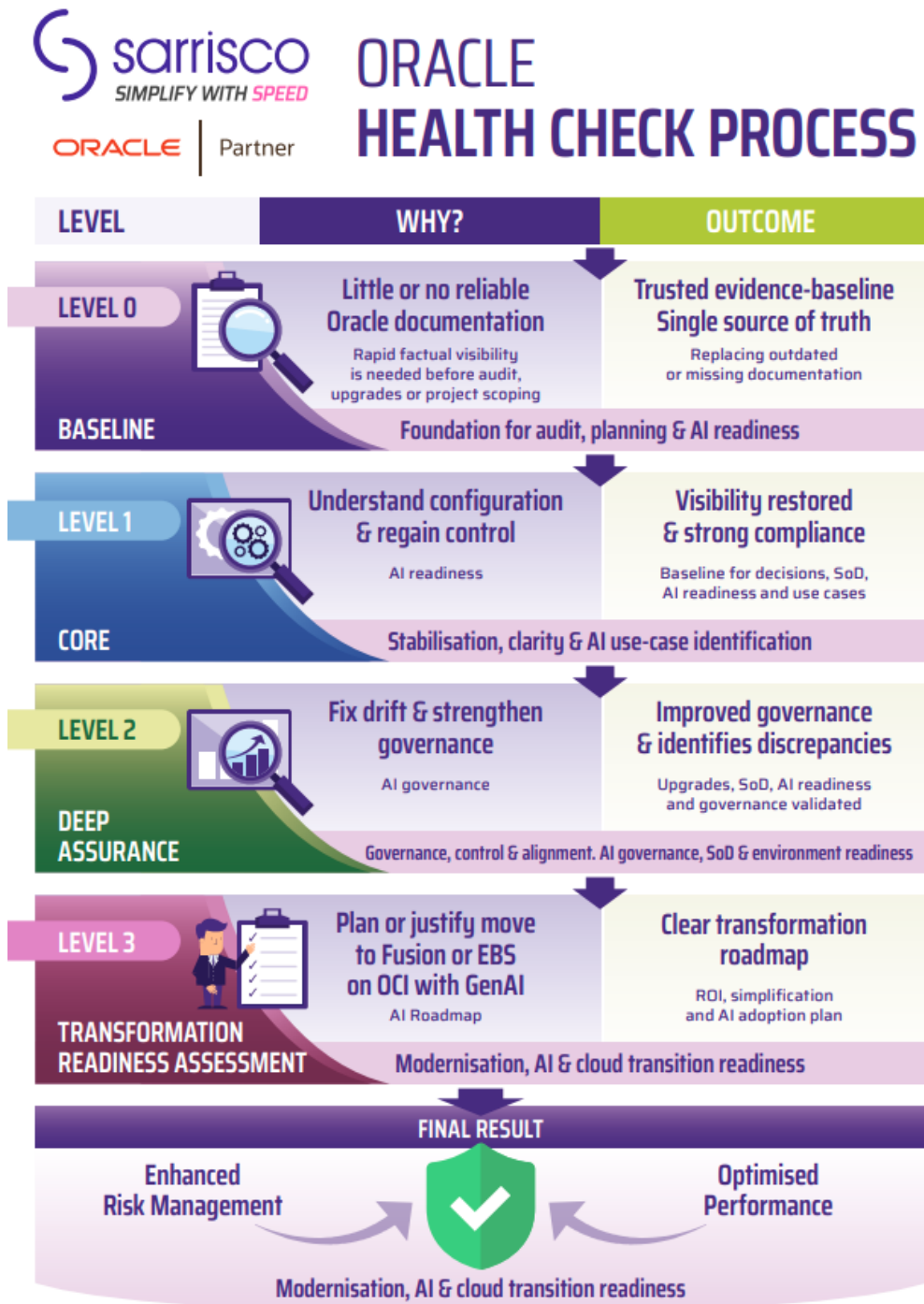
Sarrisco removes that uncertainty

Our Oracle Health Check provides a **complete, trusted, evidence-based view** of the state of your Oracle environment, functionally, technically, and strategically. Using industry-leading automation and senior Oracle architects, we uncover risks, rationalise customisations, and define a clear path forward whether your goal is to stabilise, optimise, or transform.

We offer four incremental packages designed for your exact needs. Our Health Check packages deliver trusted insight with measurable outcomes.

Health Check Packages

Each package is designed to support a different stage of maturity and need, while providing clear visibility, rapid insights, and actionable recommendations.



Level 0 – Baseline Health Check

Duration: 1 Week · Fixed Price: £5k (Remote Delivery Model)

Level 0 provides a **baseline snapshot** of your Oracle environment with *no analysis*. It is designed for organisations that lack reliable documentation or need factual visibility before beginning assessment, stabilisation, compliance, or modernisation work.

This level is intentionally light, a **documentation-only engagement** that establishes a single source of truth. It includes zero judgement and zero diagnoses.

Key Deliverables

- Automated capture of your Production configuration
- Verified inventory of all CEMLI (Configurations, Extensions, Modifications, Localisations & Integrations)
- High-level summary of notable configuration areas (no assessment or interpretation)
- Evidence-grade documentation suitable for audit, scoping, and planning

Value & Outcomes

- Clear, authoritative baseline of your current system
- Replacement for outdated or missing documentation
- Foundation for audit activity, future assessments, or project scoping
- Eliminates uncertainty about “what exists today”
- Saves time and money in later stages by eliminating uncertainty and outdated documentation
- Enables Level 1 to be delivered more efficiently and accurately

Level 1 – Core Health Check

Duration: 3–5 Weeks · Fixed Price: £25k (Hybrid Delivery Model)

Level 1 delivers your **first true health assessment**, building on Level 0 data but adding functional, technical, and compliance analysis.

It identifies risks, access issues, and configuration concerns and provides expert interpretation from senior Oracle architects, delivering expert analysis.

Ideal for organisations that want clarity, visibility, and actionable recommendations.

Key Deliverables

Includes everything in Level 0 plus:

- BR100/MD50-quality documentation of Production
- Full CEMLI analysis including purpose, usage, and risk indicators
- User access, role design, and SoD (Segregation of Duties) conflict reporting
- Assessment of patch and upgrade implications
- Prioritised list of high-value actions for stability, compliance, or optimisation
- AI readiness snapshot; standardised process for AI, CEMLI AI can support
- Define AI use-case candidates for “key decision hotspots” (3-5 per ERP, SCM, HCM, EPM)

Oracle Fusion Cloud Examples

- **Example AI Agent for Financials: Intelligent Account Combination Defaulting for Invoices.**
- **Example AI Agent for HCM: Employee Self-Service with AI Assistance** (such as **Leave and Absence Analyst, Benefits Analyst, Compensation Advisor, Payslip Analyst**)
- **Example AI Agent for SCM: : Sales Return Order Assistant** (The agent will examine your company's return policies, compare them to details on the sales order and order lines, and then reply with some return options, such as replace the item, provide a discount, or provide a full refund.), **Product Regulatory and Compliance Advisor** (The Product Regulatory and Compliance Standards Advisor agent validates the items in accordance with regulatory standards and compliance policies.), **AI Agent Inventory Expiry Assistant** (Ensures only safe and complaint inventory is processed for customer orders). **Autonomous Sourcing Assistant** (Use AI Agents to automate the sourcing process from creation to award for lower-value and high-volume negotiations, reducing buyer effort while maintaining policy compliance, and competitive outcomes.). **Purchase Orders to Sales Order Converter** (automatically converts a PO from PDF to a sales order). **Planning Measure Expression Assistant** (Translate business requirements supplied in natural language into syntactically correct measure expressions for Oracle Fusion Cloud Supply Chain Planning, through a simple chat experience)
- **Example AI Agent for Projects: Project Program Status Summary Generation** (Generative AI automatically drafts summaries highlighting key achievements, insights, and recommendations. Program managers can then easily edit and finalize the summaries, saving valuable time.)
- **Example AI Agent for EMP: Intelligent Performance Management Insight** (empowers finance and operational users with data science optimised for multidimensional planning and forecasting use cases. IPM Insights analyzes past data and predicted data, helping you find patterns and insights into data that you might not have found on your own. Insights can be trends, anomalies, forecast bias, or variations.)

Value & Outcomes

- Clear understanding of system risks and control weaknesses
- Practical, short-term recommendations for stabilisation
- Insight into configuration issues affecting audit or operations
- Strengthened governance through SoD and access clarity
- Improved confidence in decision-making for ongoing investment
- AI readiness and use cases

Level 2 – Deep Assurance Health Check

Duration: 4–6 Weeks · Fixed Price: £35k (Hybrid Delivery Model)

Level 2 provides a **multi-environment, multi-layer analysis** for organisations concerned about drift, patching discipline, release management, and technical assurance.

It goes beyond Level 1 by examining **consistency, alignment, and change control** across environments.

Level 2 moves from “snapshot health” to systemic operational assurance.

Key Deliverables

Includes everything in Level 1 plus:

- Configuration comparison between Production and Dev/Test
- CEMLI drift detection and dependency analysis across environments

- Review of release management processes and patch alignment
- Identification of systemic issues affecting stability or upgrade readiness
- Assess whether environment drifts and patching are good enough to adopt AI
- Access & SoD for AI (who will be allowed to trigger agents, AI-generated insights etc)
- Extend change-governance recommendation to cover AI Assets (prompts, agents, models, NLQ interfaces)

Value & Outcomes

- Clear visibility of environment drift and its operational impact
- Assurance that configuration, customisations, and integrations remain aligned
- Improved discipline in change, patching, and release processes
- Reduced upgrade risk through validated technical alignment
- Stronger technical governance and reduced long-term support cost
- AI governance readiness, SoD & technical alignment

Level 3 – Transformation Readiness Assessment

Duration: 6–8 Weeks · Fixed Price: £48,500 (Hybrid Delivery Model)

Level 3 is a **strategic modernisation assessment**, designed for organisations evaluating optimisation or a move to Oracle Fusion Cloud or EBS on OCI with GenAI.

It builds on Levels 1 & 2 but introduces **architectural assessment, process analysis, and transformation-level insight**.

Levels 1–2 diagnose the existing world; Level 3 designs the future.

Key Deliverables

Includes everything in Level 1 & 2 plus:

- Architecture review of all CEMLI including complexity, risk, and modernisation potential
- Current-state business process flows mapped to customisations
- Fusion or EBS on OCI with GenAI fit-gap analysis to determine functional readiness
- Path to Fusion AI or EBS on OCI with GenAI (What **EBS GenAI or Fusion embedded AI & agents** are available if moving to Fusion or EBS on OCI in the relevant modules: Finance, Procurement, Projects, SCM.)
- EBS on OCI Business Continuity in case of cyber disruption, refer to article “**Financial Continuity & ERP Resilience Framework**” for further details.
- Identify Custom GenAI for EBS or Fusion Autonomous Agentic AI Scenarios (autonomous, role-aware AI agents embedded across ERP, HCM, SCM and EPM that initiate workflows, orchestrate approvals, resolve exceptions and continuously learn.)
 - **Example Agentic AI - combining Agents in SCM (Inventory & Order Intake): Two agents in Operation (PO-to-SO and Inventory Expiry Assistant)** An orchestrated AI agent converts customer POs into sales orders and autonomously validates inventory expiry and compliance before fulfilment, ensuring only safe, compliant stock is shipped.
- AI Value Map
 - Map business problems (slow close, poor forecast accuracy, manual reconciliations, patching risk, procurement leakage) to:
 - Embedded Fusion AI features
 - Potential Agent Studio scenarios
 - EBS+OCI patterns (Ask EBS, NLQ, summarisation, etc.)

- Required EBS on OCI
- Uses NLQ + GenAI summarisation
- Full business case including options to:
 - Maintain & optimise (What AI/GenAI features can be leverages if staying on EBS – Ask EBS patterns, OCI GenAI for NLQ)
 - Modernise in stages
 - Transform fully to Fusion Cloud
- Benefits, ROI, risks, and dependency modelling

Value & Outcomes

- A complete, evidence-based roadmap to Oracle Fusion Cloud
- Clear understanding of modernisation feasibility and timing
- Insight into which customisations can be removed, rebuilt, or replaced with standard functionality
- Executive-ready business case enabling strategic decision-making
- Future-state design options with associated risks, costs, and benefits
- AI roadmap & Custom, Autonomous, Agentic Adoption Plan

Note: Level 3 is available regardless of your current ERP platform. (Levels 1 & 2 apply only to EBS and Fusion environments.)

EBS on OIC, the following illustrates the GenAI Capabilities in this Transformation.



Why Sarrisco?

Senior Oracle Architects Only

Your health check is delivered exclusively by senior Oracle EBS/Fusion architects with extensive multi-industry implementation experience. We do not rely on junior resources or template-driven analysis.

Speed, Accuracy & Quality Through Automation

Using ConfigSnapshot, the industry-leading Oracle configuration automation tool, we provide:

- Complete configuration capture
- Accurate CEMLI identification
- Environment compares at scale
- Evidence-grade outputs for audit, risk, and transformation

A Single, Clear Narrative

Others document. We interpret. We provide:

- Clear insight
- Practical recommendations
- A roadmap grounded in facts

Fixed, Transparent Pricing

No ambiguous day-rate consulting. You always know what you will receive, how long it will take, and what it will cost.

Business Outcomes at the Core

Your deliverables go beyond technical reports. You receive strategic, actionable insights that directly support decision-making at executive level.

Delivery Model

We recommend a hybrid delivery approach: 2–3 on-site days combined with remote analysis. On-site engagement accelerates collaboration, ensures clear understanding, and strengthens recommendation quality.

Our delivery is guided by Sarrisco's SPEED methodology, focusing on rapid value, structured insight, and high-quality outcomes.

Your Next Step

Whether you plan to stabilise your existing Oracle system, improve compliance, prepare for change, or explore the journey to Fusion Cloud, start with clarity.

A Sarrisco Oracle Health Check gives you the evidence and confidence to make your next strategic move.

Contact us to learn how *SPEED* can support your long-term Oracle Cloud success.

[connect with us](#)

info@sarrisco.com

www.sarrisco.com

ORACLE | Partner

The power behind our modern delivery method of cloud solutions